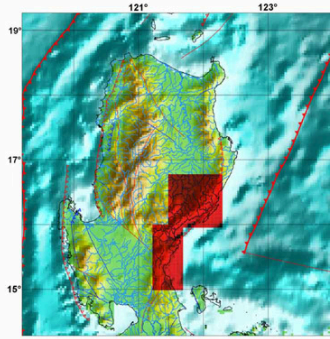


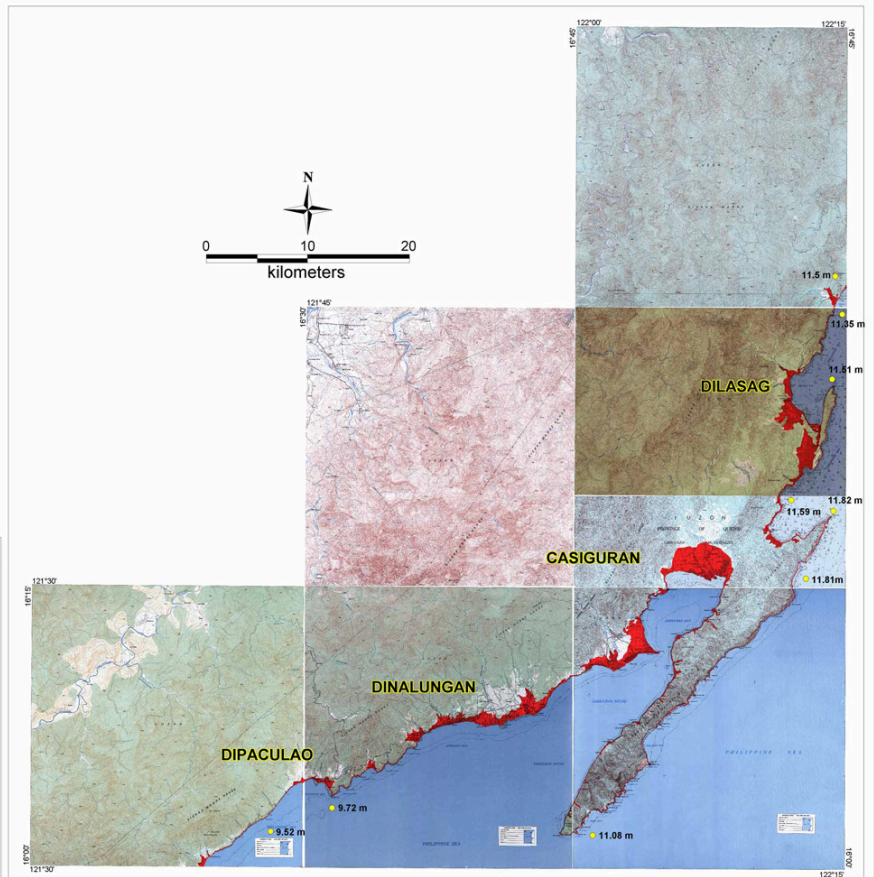
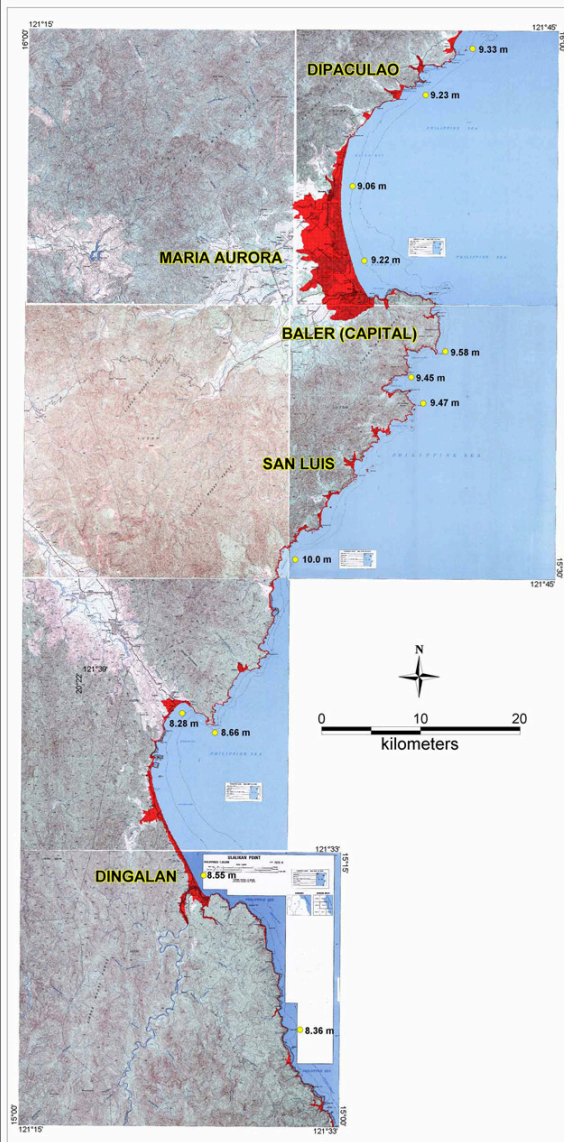
TSUNAMI HAZARD MAP

Aurora Province



Legend:

- Tsunami Inundation Area
- 3 m Tsunami Wave Height at Coastline



Earthquake Parameters Used in Modeling:

Source - East Luzon Trough
 Magnitude - 8.3

Data Source:

Modeling results using REDAS Software based on empirical equations of Abe (1989), Hall and Watt (1953), Prist (1995), and Hills and Mader (1999)

1:50,000 topographic map
 (Casiguran Sheet - 3468 IV,
 Dikabasan Sheet - 3469 III,
 Gabaldon Sheet - 7273 I (PNTMS 3231 I),
 Ulalikan Point Sheet - 7273 II,
 Ligaya Sheet - 7274 II (PNTMS 3232 II),
 San Luis Sheet - 7374 III (PNTMS 3332 III),
 Baler Sheet - 7374 IV,
 Dinalungan Sheet - 7375 II (PNTMS 3333 II),
 Nagtipunan Sheet - 7375 III (PNTMS 3333 III),
 Calabgan Sheet - 7475 III,
 Mt. Dos Hermanos Sheet - 7476 III (PNTMS 3434 III),
 Maria Aurora Sheet - 7274 I,
 Virgoneza Sheet - 7375 I;
 1993-reprint, NAMRIA)

Map Prepared By:

Philippine Institute of Volcanology and Seismology (PHIVOLCS) - Department of Science and Technology (DOST) Under the DOST-GIA Program December 2007



Explanation:

This indicative map is based on maximum computed wave height and inundation using worst case scenario earthquakes from major offshore source zones. The indicated wave height decreases away from the shoreline.