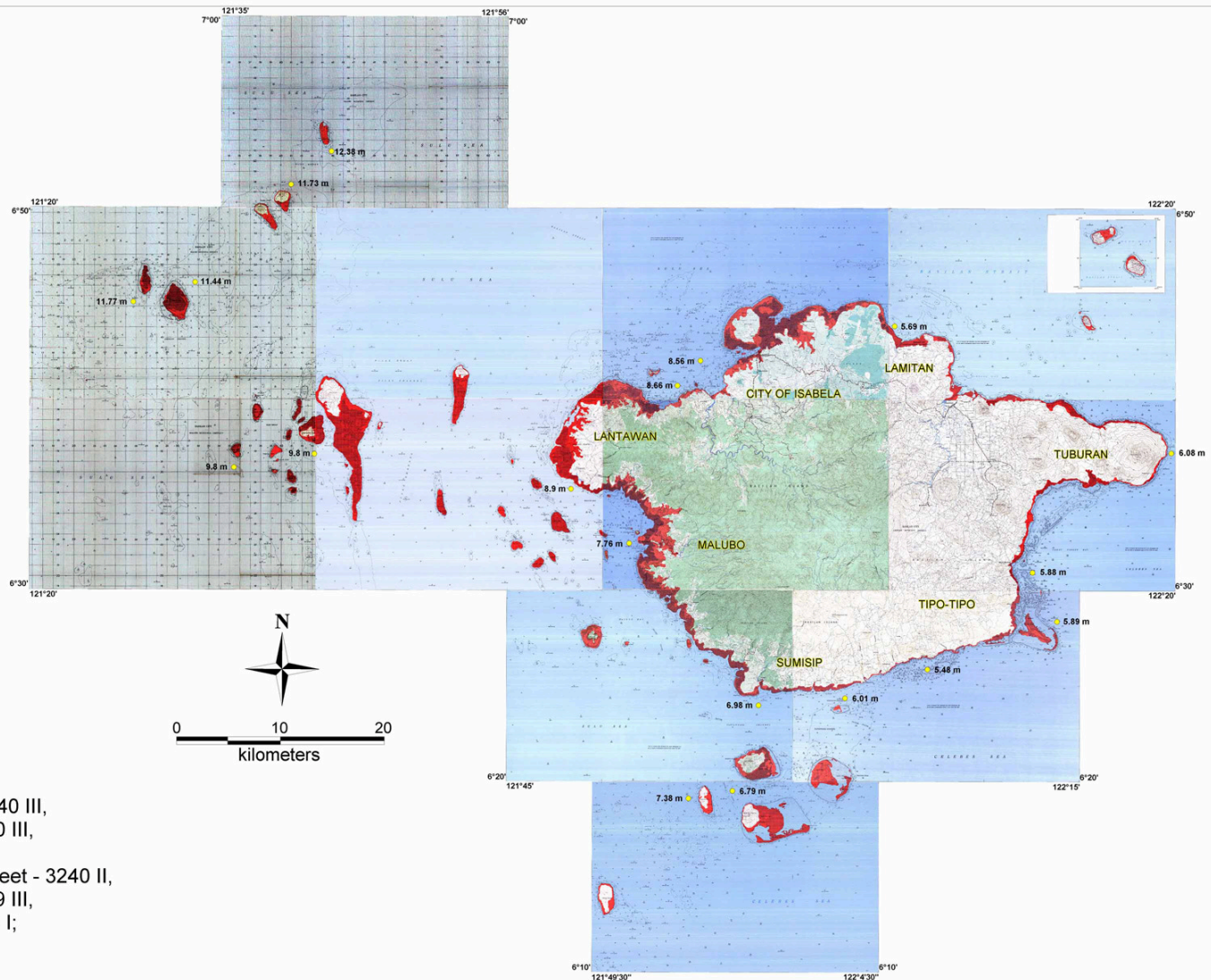
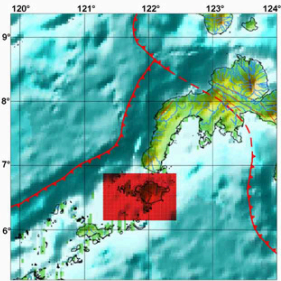


TSUNAMI HAZARD MAP

Province of Basilan



Legend:

- Tsunami Inundation Area
- 3 m Tsunami Wave Height at Coastline

Earthquake Parameters Used in Modeling:

Source - Sulu Trench / Cotabato Trench
 Magnitude - 8.0 / 8.1

Data Source:

Modeling results using REDAS Software based on empirical equations of Abe (1989), Hall and Watt (1953), Prist (1995), and Hills and Mader (1999)

1:50,000 topographic map
 (Teinga Island Sheet - 3340 IV, Balas Sheet - 3440 III, Isabela Sheet - 3340 II, Baluk-Baluk Sheet - 3340 III, Lamitan Sheet - 3439 IV, Maluso Sheet - 3339 I, Pangasahan Sheet - 3240 II, Dassalan Island Sheet - 3240 II, Minis Island Sheet - 3239 I, Amoyloi Sheet - 3439 III, Mangal Sheet - 3339 II, Tapiantana Sheet - 3338 I; 1993-reprint, NAMRIA)

Map Prepared By:

Philippine Institute of Volcanology and Seismology (PHIVOLCS) - Department of Science and Technology (DOST) Under the DOST-GIA Program December 2007



Explanation:

This indicative map is based on maximum computed wave height and inundation using worst case scenario earthquakes from major offshore source zones. The indicated wave height decreases away from the shoreline.