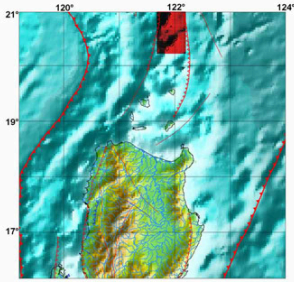


# TSUNAMI HAZARD MAP

## Province of Batanes



**Legend:**

- Tsunami Inundation Area
- 3 m Tsunami Wave Height at Coastline

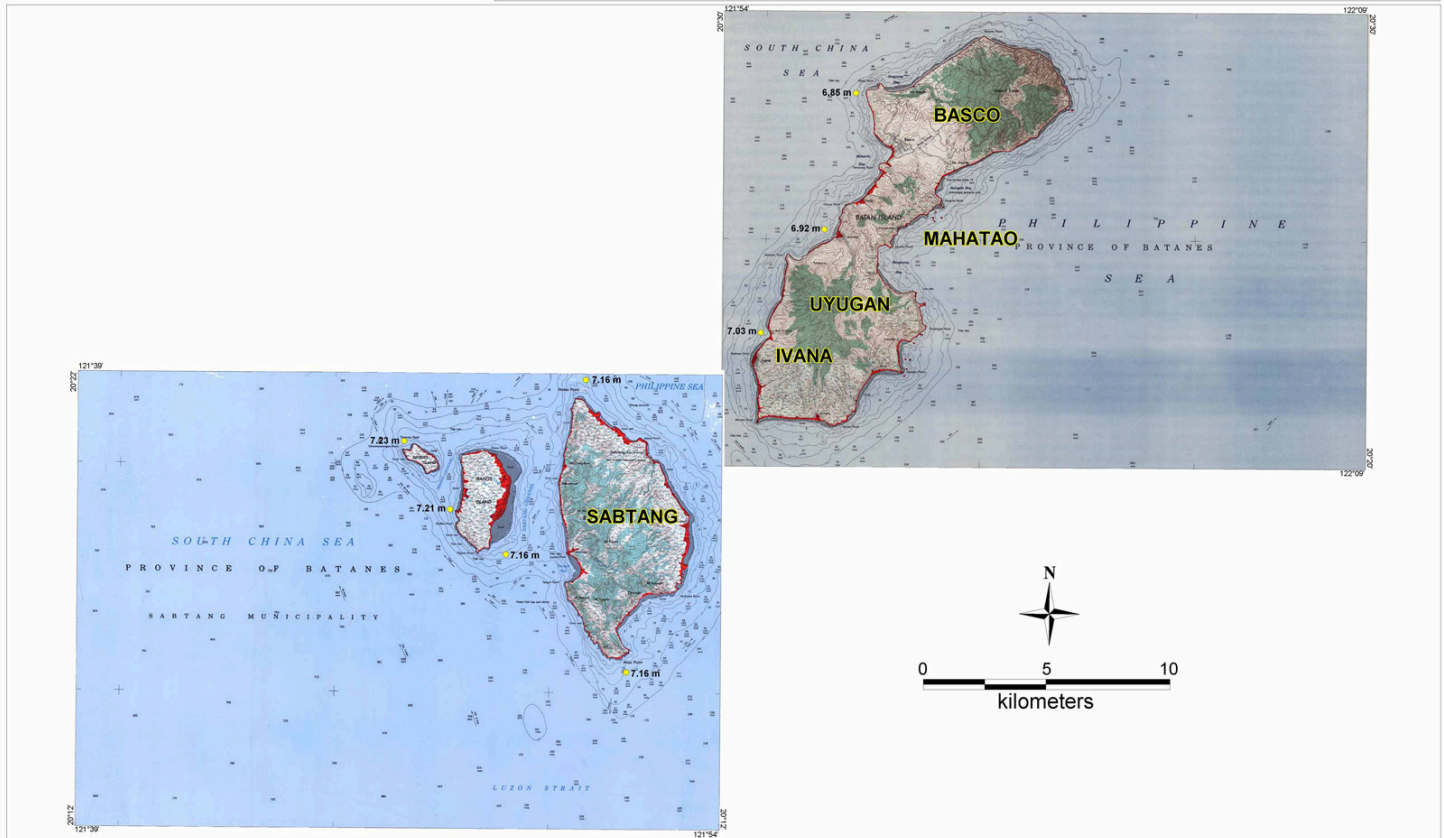
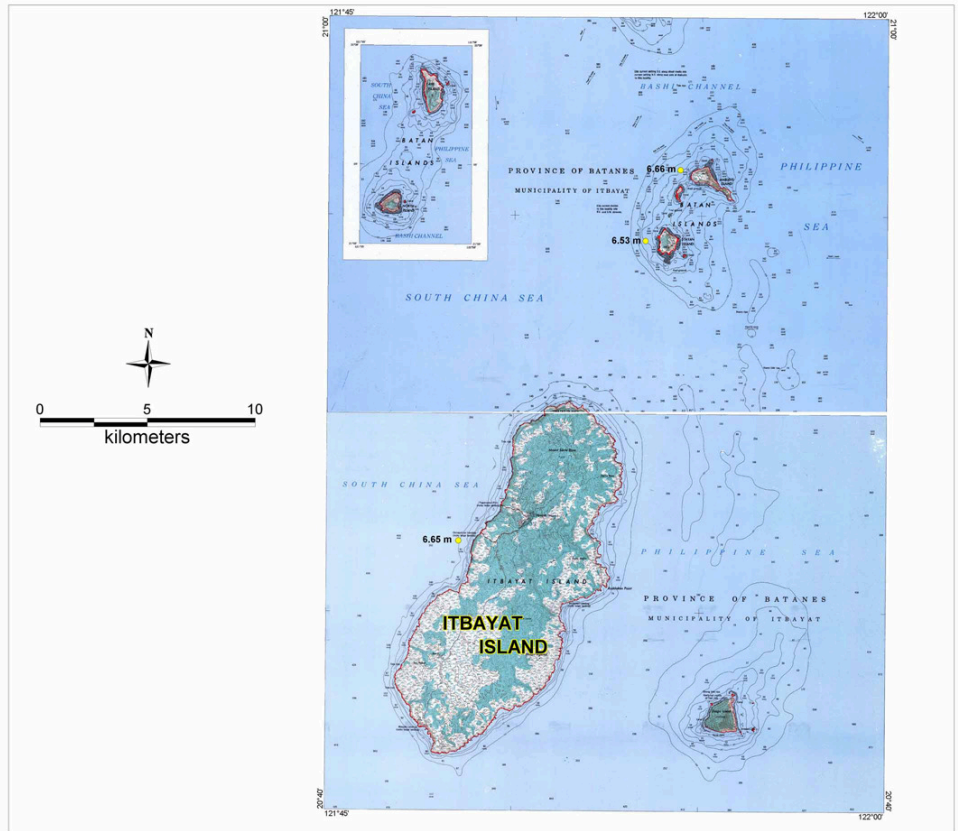
**Earthquake Parameters Used in Modeling:**

Source - Manila Trench  
 Magnitude - 8.2

**Data Source:**

Modeling results using REDAS Software based on empirical equations of Abe (1989), Hall and Watt (1953), Priest (1995), and Hills and Mader (1999)

1:50,000 topographic map  
 (Sabtang Sheet - 3380 I,  
 Itbayat Sheet - 3382 II,  
 Basco Sheet - 3481 III,  
 Mabudis Island Sheet - 3382 I;  
 1993-reprint, NAMRIA)



**Map Prepared By:**

Philippine Institute of Volcanology and Seismology (PHIVOLCS) - Department of Science and Technology (DOST) Under the DOST-GIA Program December 2007



**Explanation:**

This indicative map is based on maximum computed wave height and inundation using worst case scenario earthquakes from major offshore source zones. The indicated wave height decreases away from the shoreline.