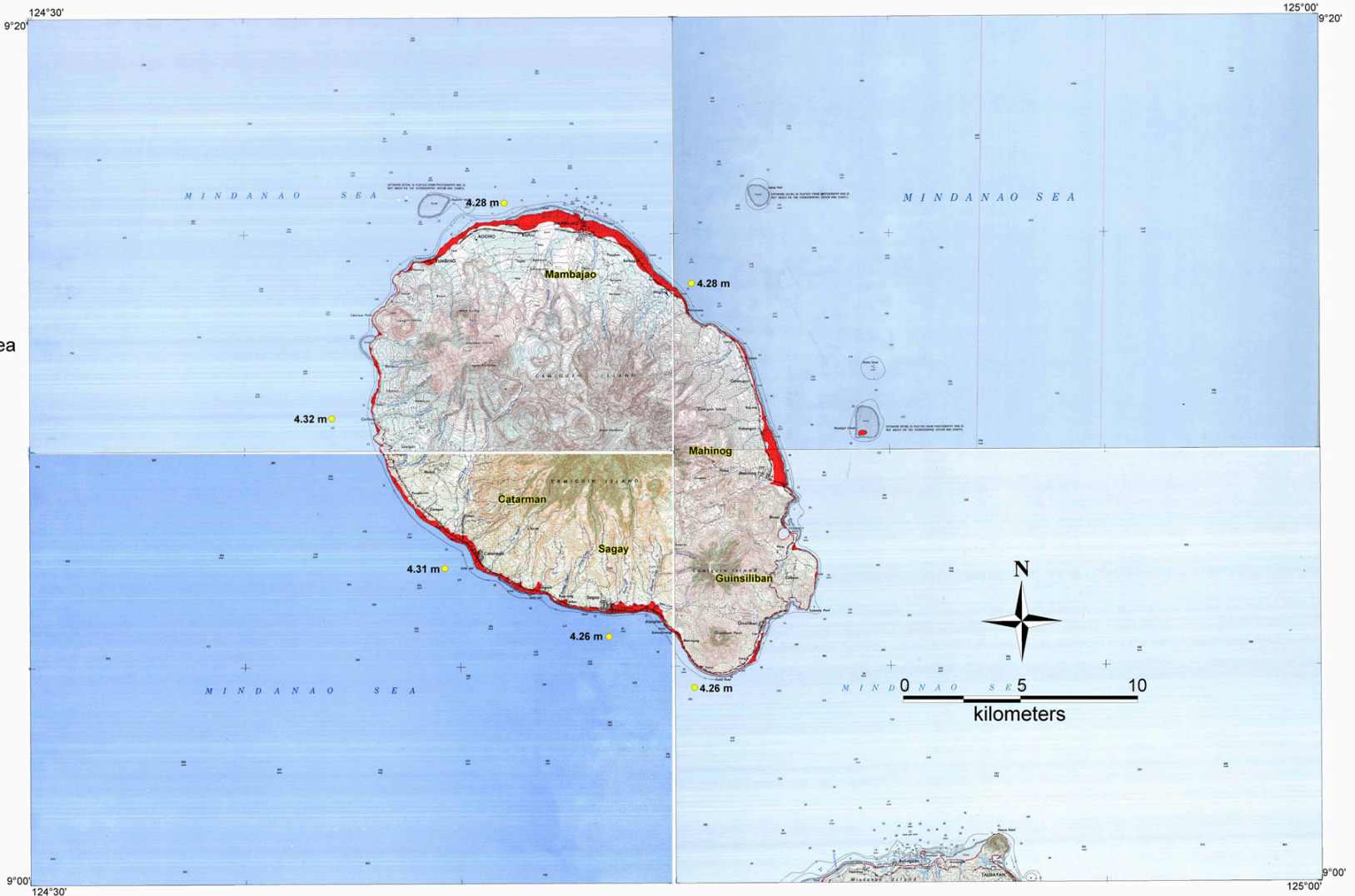
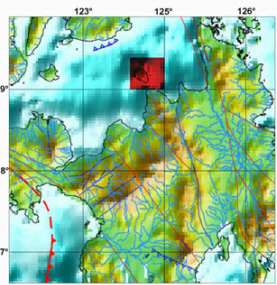


# TSUNAMI HAZARD MAP

## Province of Camiguin



**Legend:**

- Tsunami Inundation Area
- 3 m Tsunami Wave Height at Coastline

**Earthquake Parameters Used in Modeling:**

Source - Bohol Trench  
Magnitude - 8.0

**Data Source:**

Modeling results using REDAS Software based on empirical equations of Abe (1989), Hall and Watt (1953), Prist (1995), and Hills and Mader (1999)

1:50,000 topographic map (Tupsan Sheet - 3947 I, Ginsiliban Sheet - 3947 II, Sagay Sheet - 3947 III, Mambajao Sheet - 3947 IV; 1993-reprint, NAMRIA)

**Map Prepared By:**

Philippine Institute of Volcanology and Seismology (PHIVOLCS) - Department of Science and Technology (DOST) Under the DOST-GIA Program December 2007



**Explanation:**

This indicative map is based on maximum computed wave height and inundation using worst case scenario earthquakes from major offshore source zones. The indicated wave height decreases away from the shoreline.