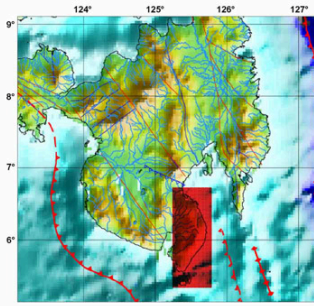


TSUNAMI HAZARD MAP

Province of Davao del Sur



Legend:

- Tsunami Inundation Area
- 3 m Tsunami Wave Height at Coastline

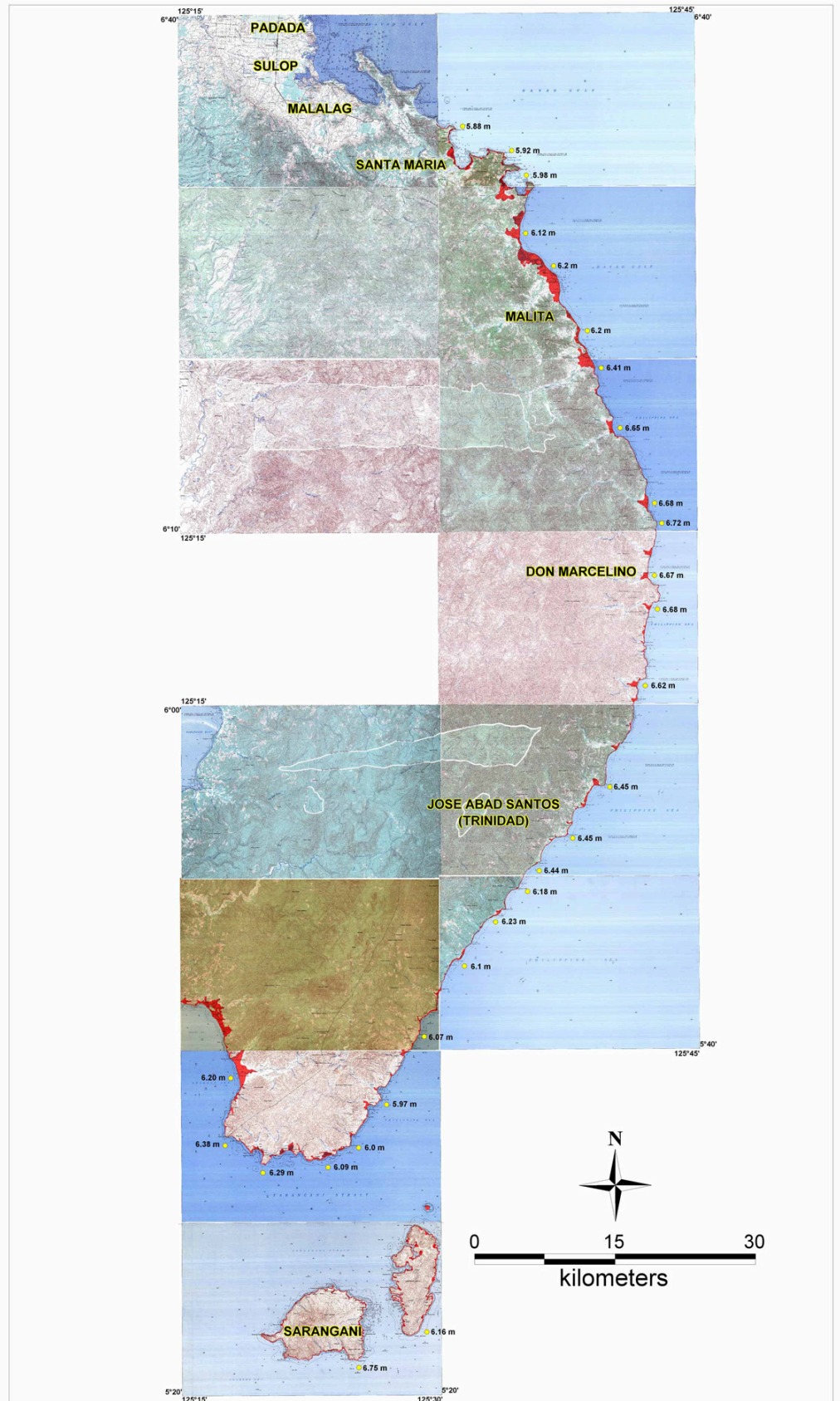
Earthquake Parameters Used in Modeling:

Source - Philippine Trench / Cotabato Trench
 Magnitude - 7.8 / 8.2

Data Source:

Modeling results using REDAS Software based on empirical equations of Abe (1989), Hall and Watt (1953), Prist (1995), and Hills and Mader (1999)

1:50,000 topographic map
 (Basiawan Sheet - 4139 IV,
 Malita Sheet - 4139 III,
 Talagutong Sheet - 4138 IV,
 Kalian Sheet - 4138 III,
 Caburan Sheet - 4137 IV,
 Tabayon Sheet - 4137 III,
 Burias Sheet - 4037 II,
 Margus Grande Sheet - 4036 I,
 Tumanao Sheet - 4036 II,
 Maluñgun Sheet - 4038 I,
 Padada Sheet - 4039 I,
 Kabayawa Sheet - 4039 II,
 Malapatan Sheet - 4037 I;
 1993-reprint, NAMRIA)



Map Prepared By:

Philippine Institute of Volcanology and Seismology (PHIVOLCS) - Department of Science and Technology (DOST) Under the DOST-GIA Program December 2007



Explanation:

This indicative map is based on maximum computed wave height and inundation using worst case scenario earthquakes from major offshore source zones. The indicated wave height decreases away from the shoreline.