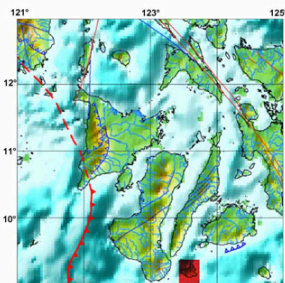


TSUNAMI HAZARD MAP

Province of Siquijor



Legend:

- Tsunami Inundation Area
- 3 m Tsunami Wave Height at Coastline

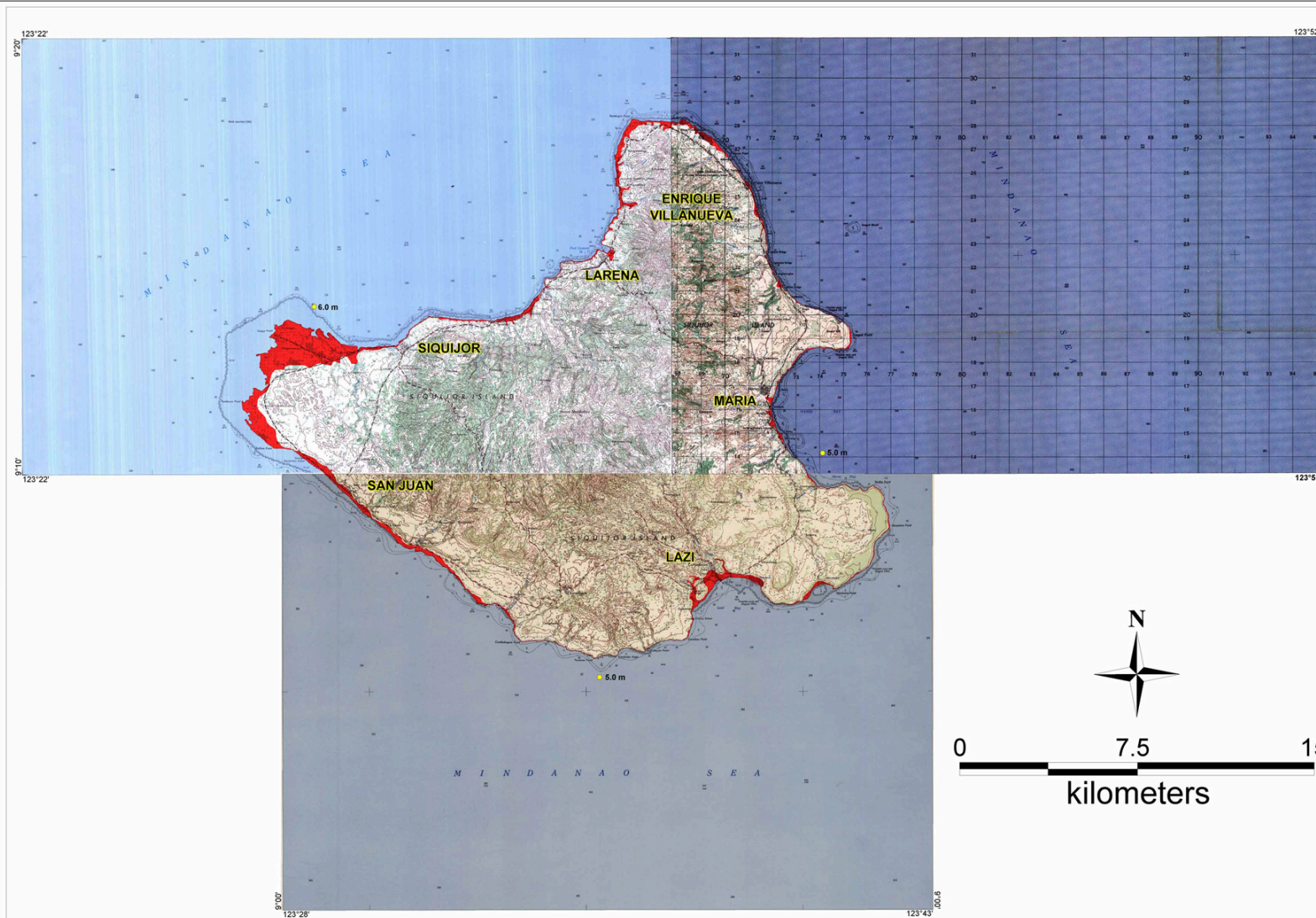
Earthquake Parameters Used in Modeling:

Source - Negros Trench
Magnitude - 8.0

Data Source:

Modeling results using REDAS Software based on empirical equations of Abe (1989), Hall and Watt (1953), Prist (1995), and Hills and Mader (1999)

1:50,000 topographic map
(Larena Sheet - 3647 I,
Lazi Sheet - 3747 III,
Maria Sheet - 3747 IV;
1993-reprint, NAMRIA)



Map Prepared By:

Philippine Institute of Volcanology and Seismology (PHIVOLCS) -
Department of Science and Technology (DOST)
Under the DOST-GIA Program
December 2007



Explanation:

This indicative map is based on maximum computed wave height and inundation using worst case scenario earthquakes from major offshore source zones. The indicated wave height decreases away from the shoreline.